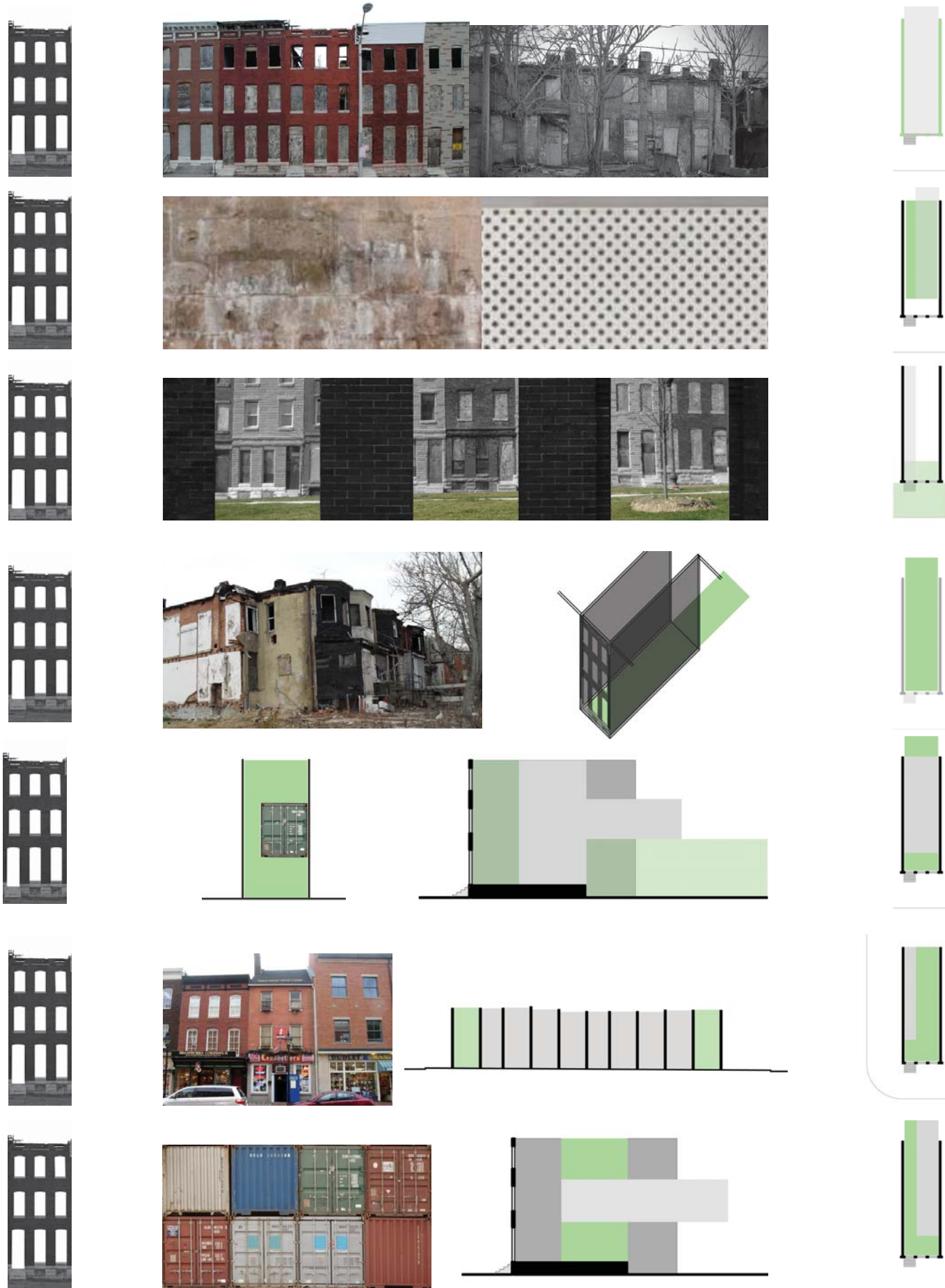


# ARCHITECTURAL RESPONSE



## SAVE WHAT SHOULD/CAN BE SAVED

- Maintain the historic front facade in conditions applicable.
- Discard areas of little architectural importance (i.e. the rear facade, recent additions, etc.).

## AVOID SUBVERSION OF NEW AND OLD

- Create a clear architectural separation of the existing building and the insertion of new material.
- Allow this new typology to be evident from the public.

## ENGAGE THE PUBLIC STREETScape

- Follow the regulating circulation lines of the rowhouse to engage the public space.
- Visual connections through green, public space shall be made from sidewalk to median.
- Entry courtyards into the units instill a connection from the interior of the unit to the public.

## WORK WITH EXISTING FOOTPRINT AND BACK LOT

- Use the land in the rear of the rowhouse as the “backyard” for further built expansion if necessary.
- This expansion should maintain the privacy of the home while opening publicly to the shared space.

## CONDITIONED SPACE SETS UP EXTERIOR SPACE

- Create a dialogue through the shipping container forms to take advantage of outdoor space.
- Shift the containers to create overhang and balcony spaces.
- Width of shipping container sets up side yard potential and lighting conditions on the side of the units.

## INCORPORATE COMMERCIAL SPACES

- In spaces appropriate, such as the corner lot, provide amenities to promote re-population.
- Programs should be appropriate for neighborhood and/or operated by the neighborhood.
- Architectural language of commercial space should be different than that of the residential.

## THE SHIPPING CONTAINER IS NOT THE ONLY ANSWER

- Other architectural elements should be added to take advantage of the entire width of the site.
- Masonry should be avoided in material usage to maintain a seamless architectural language.
- The usage of the shipping container, when applicable, should be core elements in commercial.